

A topographic map of the UCLA and Bel-Air area. The map features a pink shaded region covering the central and upper portions, and a light blue shaded region covering the lower and right portions. A network of green lines is overlaid on the map, representing various routes or boundaries. The text is printed in large, bold, black capital letters over the map.

**UCLA -  
BERGGRUEN  
WILDFIRE  
PROTECTION  
PLAN**

**VOLUME 1  
BEL-AIR**

# UCLA - BERGGRUEN WILDFIRE MITIGATION PROJECT

## VOLUME 1 RECOMMENDATIONS FOR BEL-AIR

REV. JAN 2025



<https://www.aud.ucla.edu/research>



Stone Canyon Reservoir



Roscomare Road  
Elementary School



Stradella Rd-  
Red Flag No Parking Road



Linda Flora Dr-  
Red Flag No Parking Road



Hillside fuel



Hillside fuel



Hillside fuel

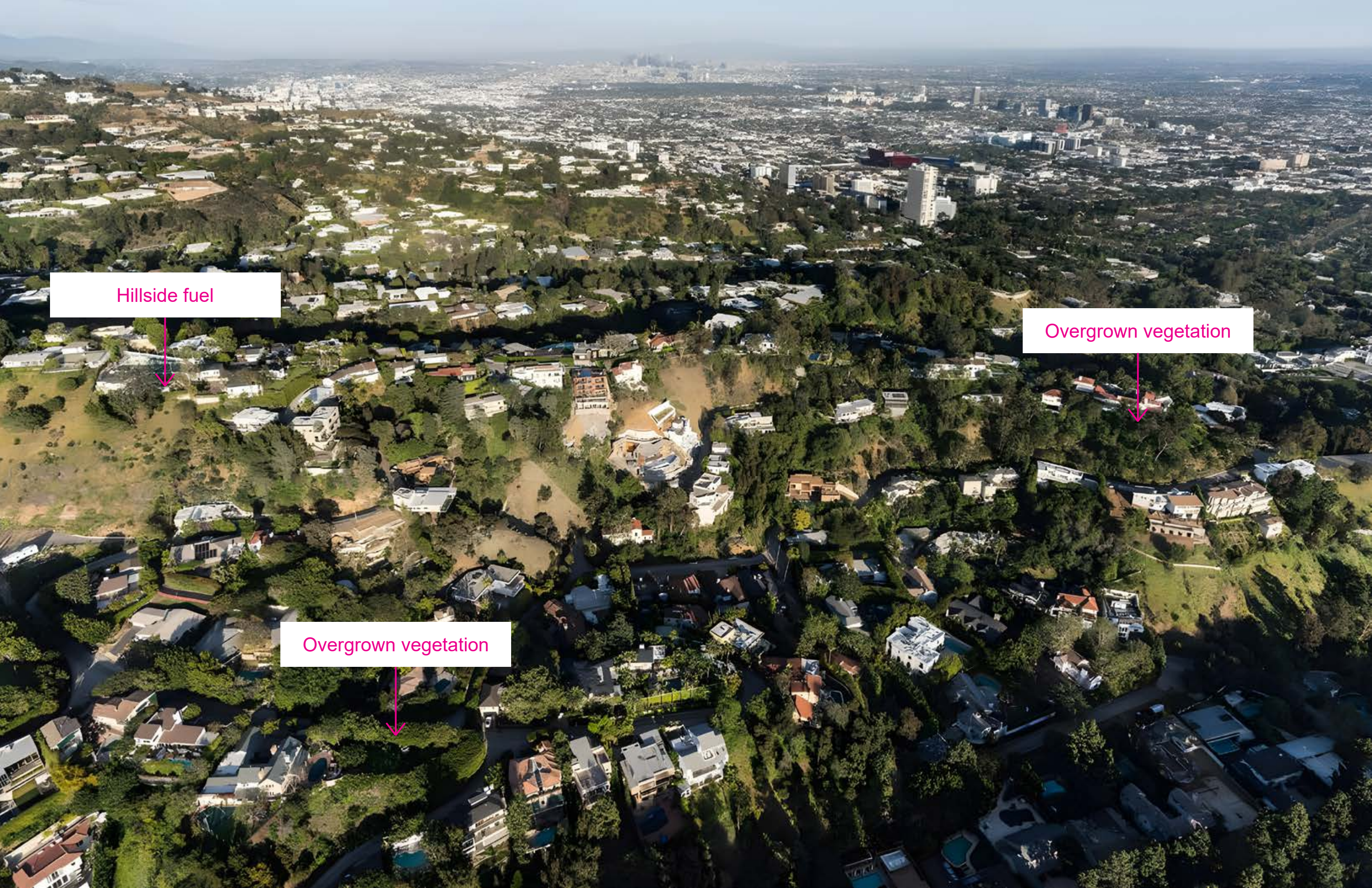


Hillside fuel

Overgrown vegetation

Harvard-Westlake Middle School

Benedict Canyon Dr -  
Red Flag No Parking Road



Hillside fuel

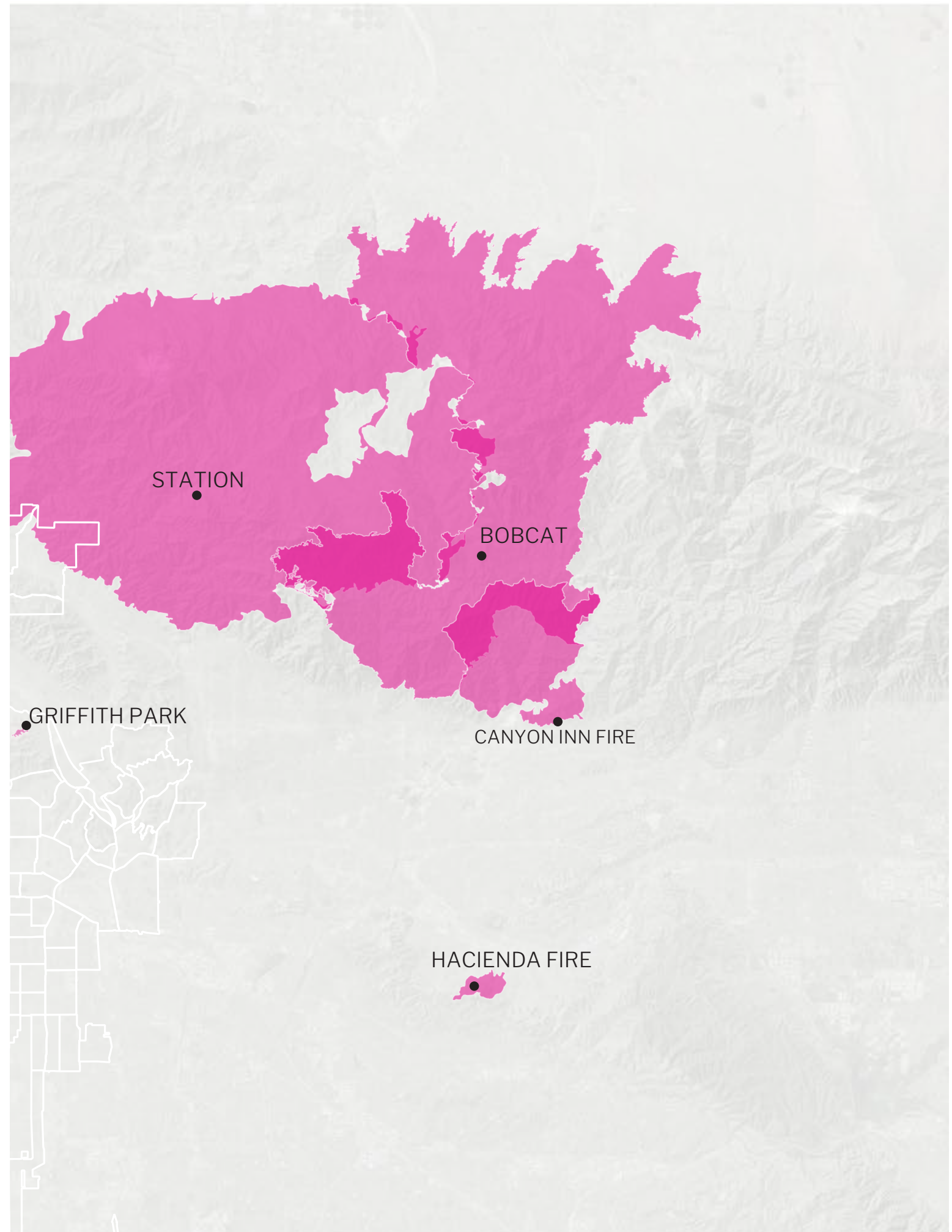
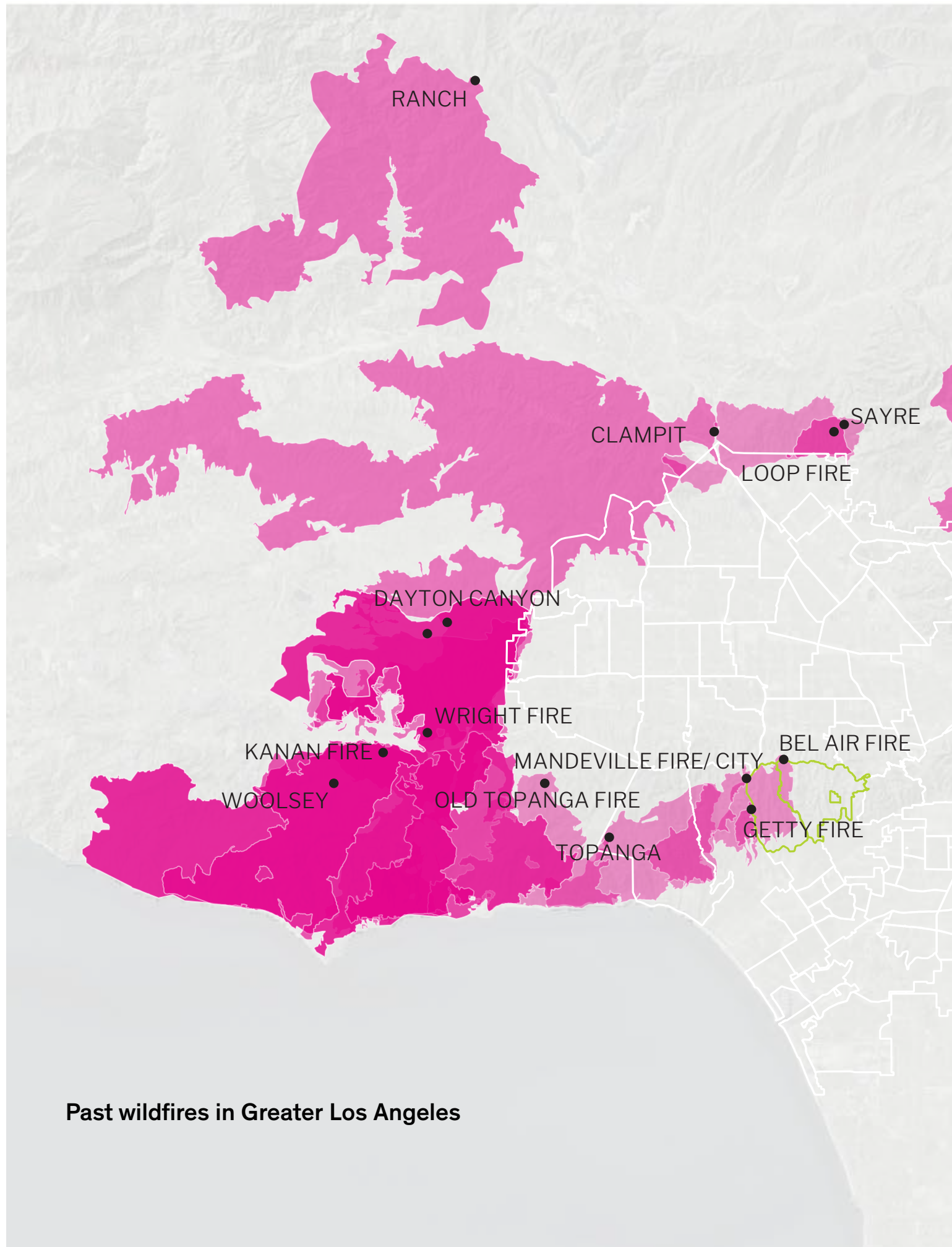


Overgrown vegetation



Overgrown vegetation





# Executive Summary

## Executive Summary

Coordinated action by homeowners in collaboration with government agencies is critical to reduce the risk of wildfires.

The Wildfire Mitigation Project led by UCLA Architecture and Urban Design and the Berggruen Institute is an effort to assist communities to lower the chances of wildfire ignition and spread. Los Angeles residents are increasingly vulnerable to the threat of fire, and hillside communities abutting wildlands are at greatest risk. Coordinated action by homeowners and government agencies is urgently needed to minimize the loss of life and property.

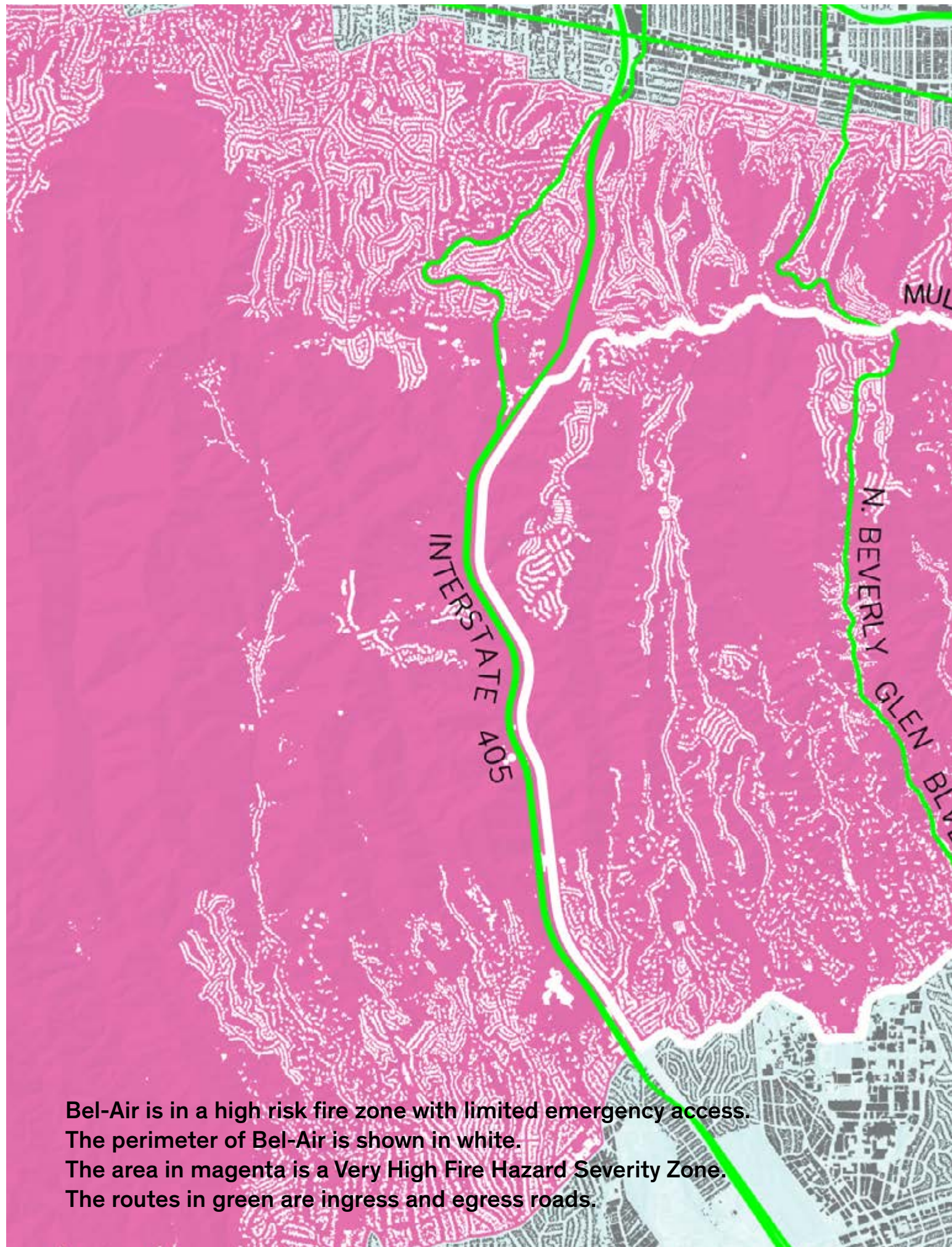
The first in a series of studies of Santa Monica Mountain neighborhoods from Topanga to Laurel Canyons, is a study of Bel-Air.

Bel-Air residents are deeply concerned about the risk of wildfires and homeowner associations have organized to introduce preventive measures. To build upon their initiative, the Wildfire Mitigation Project convened the first of two Bel-Air workshops to learn about pressing issues and ongoing efforts, and have prepared recommended actions.

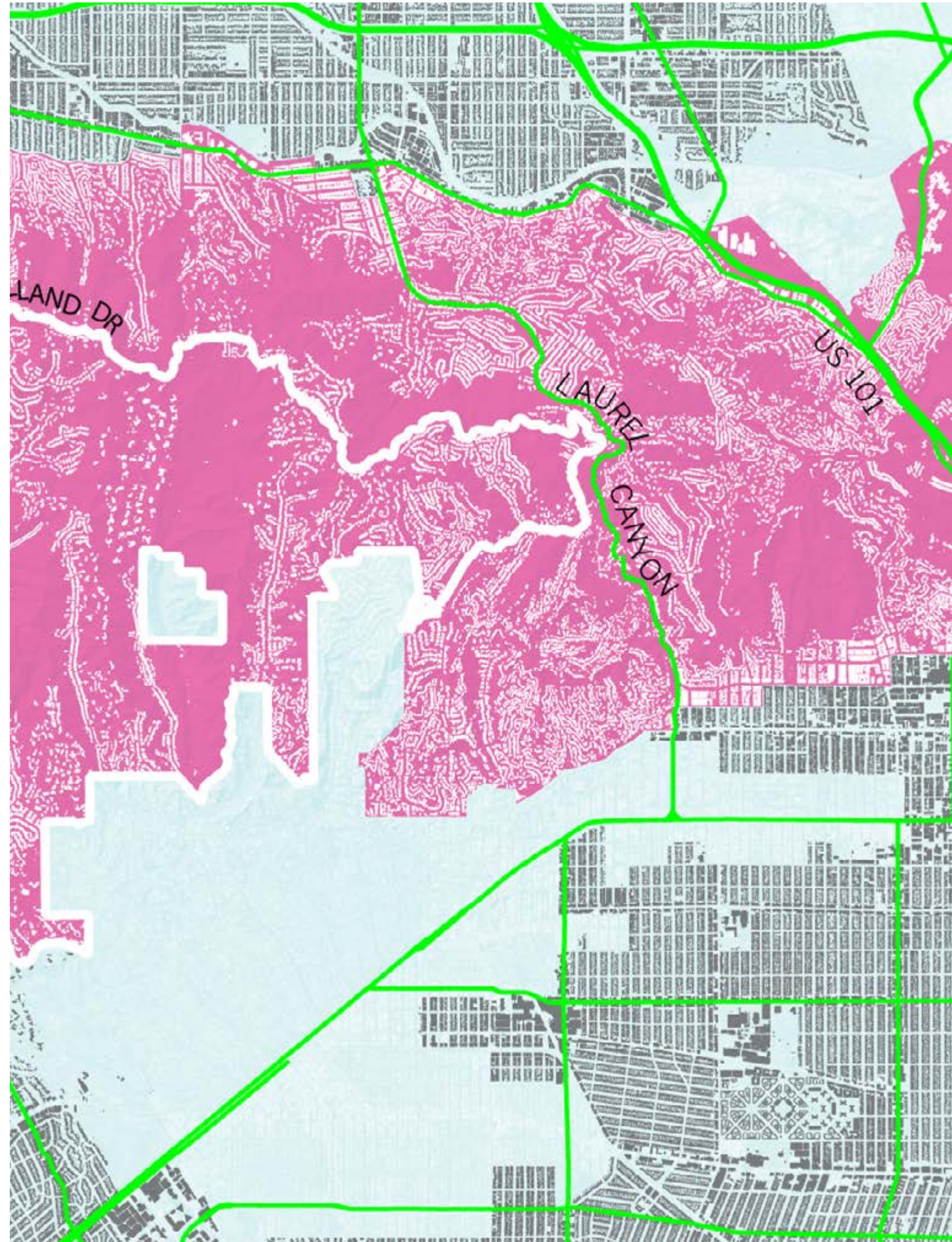
The second workshop will seek feedback on the recommendations, after which a public report will be provided to serve as an action plan resource for the Bel-Air community. In addition, the report will present recommendations to strengthen the resilience of other Santa Monica Mountains neighborhoods.

## Objectives

1. Assist residents to prepare for the imminent occurrence of wildfires and to minimize damage caused in their community
2. Gather relevant information from people living in Bel-Air, emergency response agencies, utility companies, fire mitigation experts, and government officials - and to share this information with all stakeholders invested in the community's safety
3. Create a shared document to serve as a community resource for coordination, mobilization, and action



Bel-Air is in a high risk fire zone with limited emergency access. The perimeter of Bel-Air is shown in white. The area in magenta is a Very High Fire Hazard Severity Zone. The routes in green are ingress and egress roads.



# Why Bel Air?

## Why Bel-Air?

Because the Bel-Air community has already taken meaningful steps to minimize exposure to wildfires and is committed to taking further actions, it serves as a model of what can be done by local residents. Hillside neighborhoods are especially vulnerable to fire and Bel-Air possesses several typical risk factors including limited emergency ingress and evacuation egress, large areas of surrounding natural brush, and fuel build up. We believe working with the Bel-Air community will help residents level up their mitigation efforts, while creating a set of best practices that will benefit other LA communities.

### Affirmative Factors and Actions That Minimize Wildfire Risk:

- Involved homeowners are acutely aware and concerned about fire hazard risk, and are proactively addressing those risks.
- Homeowner commitment to brush clearance. Homeowner Associations (HOAs) have robust brush clearance programs. HOAs encourage all homeowners to communicate any suspected noncompliance with brush clearance. HOAs facilitate anonymous reporting to the LAFD Brush Clearance Unit.
- Local security services company provides 24/7 roving patrol throughout Bel-Air.
- HOAs proactively monitors risks.
- Many neighborhood and homeowner cameras monitor constantly.
- Neighborhood emergency response committees/programs established by HOAs includes block captains equipped with walkie talkies.
- HOAs host webinars regarding wildfire preparedness and answers homeowner questions.
- High percentage of homes with monitored fire/smoke alarms.
- HOAs are actively working with cell phone carriers to improve coverage.
- Bel-Air has virtually all utility lines underground, lowering the risk of utility line ignition.
- HOAs are working with MYSAFE LA to become a certified Fire Safe Council.
- Bel-Air has three fire stations in its vicinity (Station 71 Beverly Glen, Station 37 Veteran, Station 99 Mulholland)

- HOAs work with LAFD & LAPD representatives.
- There are WhatsApp chat groups for all areas in Bel-Air. All chats are monitored by HOAs and the private security patrol. Localized neighborhoods within the Bel-Air community are constantly in contact with each other on a variety of public safety issues in real time.
- HOAs encourage residents to sign up for Red Flag Day notifications.



One objective is to manage fuel build up in canyon hillsides.



The greatest priority is to reduce build up near homes.



Another is managing hillside brush so emergency vehicles can safely access the area during fires.



Fortunately, the vast majority of power runs underground minimizing electrical spark ignition. We recommend working with utilities to properly maintain overhead lines that do exist, as well as transformers.

# Workshop 1

## Apr 27, 2024

### Workshop 1

Bel-Air residents face a myriad of fire safety and resilience challenges. During the April 27, 2024 group discussion, numerous issues were highlighted, reflecting the complex interplay between urban development, environmental management, and emergency preparedness. They encompass a broad spectrum of concerns, including inadequate infrastructure, traffic congestion, needed vegetation management, and improved emergency ingress and egress. Additionally, the discussion underscored the importance of cohesive community efforts to limit wildfire risks through wildfire prevention and detection, and the enforcement of existing regulations.

The dialogue brought to light the obstacles posed by political, economic, and social factors. There is a pressing need for better coordination between residents and various levels of government to ensure that fire safety measures are effectively implemented. The importance of communication, community advocacy, and legislative action cannot be overstated in the quest to enhance the safety and resilience of Bel-Air against the threat of wildfires.

The findings of the workshop were used to create a set of recommendations which follow in the next section.

#### Workshop Organization

The workshop involved residents from the Bel-Air Association and Bel-Air-Beverly Crest Neighborhood Council, and representatives from Bel-Air-based organizations, LAFD, LADWP, UCLA Emergency Management, and X [needs editing]. It was facilitated by Gabriel Kahan from the Berggruen Institute, Emile Mack, LAFD Deputy Chief retired, and Jeffrey Inaba from UCLA Architecture and Urban Design.

The workshop consisted of two stages: Stage 1, a discussion with all the participants discussing urgent concerns, and; Stage 2, breakout group discussions, with each group tackling one theme brought to light during the large group discussion.

## Stage 1 - Large Group Discussion

The following list is an overview of the concerns raised during the large group discussion. They focus on aspects of fire safety, prevention, and community coordination. In working with the group, we came away with a strong sense of community and commitment to work together to improve fire mitigation measures.

### General Concerns:

1. Overall need for better coordination and communication between department agencies and the community.
2. Need for more and updated fire mitigation infrastructure such as hydrants, no-parking signs, high fire risk signs, red flag day no parking zones.
3. Need for better coordination with LAFD to formulate emergency plans.
4. Vegetation management of public land and private property.
5. Brush clearance compliance and enforcement.
6. Stronger response from City Council on fire danger and mitigation, emergency response, insurance issues.

### Improving Access

1. Due to the Parking Enforcement's spotty citation and/or towing of illegal parking (even when notified) especially on Red Flag days, emergency and evacuation vehicle access is compromised. This is a critical and emergent wildfire risk situation. Need for aggressive and proactive parking enforcement.
2. Narrow roads contribute to the need for the City to remain vigilant in enforcing no parking areas. The lack of parking enforcement is a serious concern.
3. Lack of parking enforcement at construction projects. Many vehicles are parked in no parking areas on the street that are associated with construction projects. Also, staging, loading, and unloading of construction deliveries blocks a lane or both lanes of traffic without approved road closures or adequate flag men.

4. Although the city has repaired many roads based upon repeated community reports, some roads specified in reports are still in need of repair. For example, the Bel Air Road artery above Stone Canyon would be important for emergency equipment access, and requires repair.

5. Need for better secondary egress in the event of an evacuation. Some areas in Bel-Air near the top have only one way in and out. The community believes that there are fire roads that exist but the City does not make them accessible. This results in limited emergency vehicle access and resident egress during a fire.

### Community Communication and Education Needed:

1. Educate residents about fire safety, prevention, and resilience; address misconceptions about wildfire risks and prevention; share info on climate effects that increase fire threat; educate residents about home fire hardening measures.
2. Educate the community about fire resistant and fire prone plants and trees.
3. Coordinate between residents and public agencies, including matching issues with the appropriate agencies in order for action to occur.
4. Engage residents to proactively enact fire safety measures.
5. Create a better balance between fire mitigation and wildlife protection policies (related to the Wildlife Ordinance). There is a lack of political will to prioritize wildfire threat.
6. Have a better understanding of LAFD technology to detect fires.
7. Further engagement of the private sector in fire prevention efforts.
8. Address the challenges in emergency evacuation plans; participate in the coordination of emergency services for effective fire response.
9. Form better relationships with neighborhood groups in order to apply unified pressure on officials, agencies, utilities, service providers, etc. Form an advocacy group to lead a collective fire safety initiative.
10. Explore the use of AI technology for fire detection and response.

#### Community & Government Coordination Needed:

1. Need for improved response from the City and applicable departments and agencies about expressed concerns.
2. Legislative action, including the importance of targeted legislation to enact near term fire safety measures; address overgrown vegetation on private hillside properties.
3. Necessity for the appropriate government agencies and departments to be more proactive in deterring campfires and proactive inspections of unhused encampments to make sure they are fire safety compliant. Removal of encampments in high fire danger areas.
4. Effective use of fire management resources and budget.
5. Develop a comprehensive fire management plan.

#### Stage 2 - Break Out Group Discussions

Participants joined a smaller discussion centered around one of three themes agreed to by all the participants. They were: Public/Private Collaboration, Access, and Fire Mitigation.

##### 1. Public/Private Collaboration

Public/private collaboration involves coordinated efforts between residents, homeowner associations (HOAs), local government entities, and various public and private agencies. This collaboration is crucial for pooling resources, expertise, and authority to address fire risks comprehensively. Priorities include forming a resident leadership group, identifying priorities, engaging with council members to secure government support, and convening agencies to ensure coordinated actions. By fostering strong relationships and maintaining regular communication, public/private collaboration enables a unified approach to fire safety, enhancing the community's ability to prepare for, respond to, and recover from wildfire threats effectively.

##### Resident Leadership Group

Forming a Resident Leadership Group will ensure a unified and coordinated approach to fire mitigation efforts within the Bel-Air community. The Bel-Air Association is already taking a leading role with this. It is important because a cohesive leadership group can effectively organize and guide community efforts, ensuring representation and collaboration among various homeowner associations (HOAs) and residents. This priority emphasizes the need for dedicated leaders who have the time and commitment to drive initiatives, engage stakeholders, and build consensus. By having a strong leadership group, the community can better advocate for its needs, coordinate actions, and achieve more significant results in fire safety and mitigation.

##### Identifying Priorities

Identifying priorities was included as a priority to focus community efforts and resources on the most critical issues. This priority is important because it helps to establish clear goals, ensuring that all stakeholders are aligned and working towards common objectives. By gathering input from residents and HOAs, the community can identify and agree on specific, achievable goals that demonstrate success and build momentum for further initiatives. Prioritizing allows the community to address the most pressing needs first, ensuring efficient use of resources and increasing the likelihood of successful outcomes in fire mitigation efforts.

### Council Member Engagement

Engaging at the local level and with council members was included to advocate for community needs and secure government support. This priority is important because councilmembers can act as liaisons, coordinating actions and resources across various government agencies. By maintaining regular communication and involving councilmembers in community activities, the community can leverage these relationships to access resources and support needed for effective fire mitigation. This engagement ensures that the community's needs are prioritized and that there is a concerted effort by local government to support fire safety initiatives.

### Convening Agencies

Convening agencies was included to foster collaboration between various public and private entities involved in fire mitigation and emergency preparedness. This priority is crucial because coordinated actions and efficient use of resources are essential for effective fire safety measures. By holding regular meetings and involving key agencies like the Department of Water and Power, LAFD, and the Santa Monica Mountains Conservancy, the community can ensure that all stakeholders are aligned and working together. Formal agreements and regular communication channels help to define roles and responsibilities, securing commitment and enhancing collaboration for comprehensive fire mitigation efforts.

## 2. Access Group

The Access group defined "access" as the ability to ensure clear and unobstructed routes for emergency vehicles and resident evacuation during emergencies. Six key interconnected priorities were identified: signage, enforcement, road maintenance, educating residents about fire risks, interagency collaboration, and early evacuation communication. These priorities encompass the need for visible and maintained signs, consistent enforcement of regulations, well-maintained roads, educated and informed residents, effective coordination among various agencies, and timely communication about evacuation orders. By addressing these areas, the group aimed to enhance overall safety and preparedness in the community.

### Signage

Signage was discussed as a critical component for maintaining access and ensuring public compliance with safety regulations. The group emphasized the need for clear, visible signs to mark parking restrictions, fire danger levels, and general traffic safety. They highlighted issues such as signs being taken down by construction crews and the lack of visible Red Flag Day restrictions. To address these challenges, the group suggested improving visibility and maintenance of signage, educating the community about the signs' importance, and advocating for consistent enforcement by city services. This priority was included by the group to ensure that resident expectations are clearly communicated and that compliance is maintained for safe access by emergency vehicles and residents.

### Enforcement

Enforcement is crucial for ensuring compliance with parking and traffic regulations in order to maintain clear access for emergency vehicles and residents. The group discussed challenges such as inconsistent enforcement, prioritization of revenue-generating ticketing areas outside of Bel-Air, and contractors blocking roads. Strategies included advocating for consistent enforcement, collaborating with the Department of Building and Safety, and utilizing the 311 system for reporting problems. This priority was included to address the gaps in enforcement and ensure effective regulation compliance. Another issue raised is that the community does actively request enforcement but actual enforcement has been limited.

### Road Maintenance

Road maintenance is essential to ensure roads are in good condition to allow easy access for emergency services and resident evacuation. The access group identified issues such as degraded roads and delay in repairs. They emphasized the importance of expediting road maintenance and repairs, coordinating with governmental entities like DWP for alternative exit routes, and using the 311 system for reporting road maintenance issues. This priority was included to address the physical barriers to access and ensure roads are well-maintained to support emergency response efforts.

### Community Education

Educating the community was discussed to ensure residents are informed about safety measures, regulations, and the importance of compliance. The access group emphasized the need for regular education campaigns through community meetings, flyers, and existing email programs to keep residents informed about fire risks and safety measures. They highlighted challenges such as lack of participation and awareness among some residents. Strategies included leveraging existing communication channels, promoting community involvement, and developing clear communication strategies. This priority was included to enhance community awareness and participation in fire safety and mitigation efforts.

### Interagency Collaboration

Interagency collaboration can enhance coordination between different agencies for better emergency response and access management. The group emphasized the need for effective collaboration with entities like the Department of Water and Power, fire departments, (Building and Safety, Public Works, etc...), and city officials. They identified challenges such as varying responsibilities and communication methods among agencies. Strategies for improvement included developing clear communication protocols, leveraging existing relationships, promoting legislative support, and conducting regular training and drills. This priority was included to ensure a coordinated and effective response to emergencies, involving all relevant agencies.

### 3. Mitigation Group

The group defined Mitigation as the various proactive measures taken before a fire occurs to reduce its impact. Key priorities include communication systems, early detection, brush clearance, awareness of vegetation, and educational resources. Communication systems are critical for timely and reliable information dissemination during emergencies. Early detection through AI-driven cameras and community reporting allows for swift responses to potential fires. Regular brush clearance reduces flammable vegetation, creating defensible spaces around properties. Raising awareness of vegetation types and management practices helps residents maintain safer landscapes. Together, these priorities form a holistic approach to fire prevention, making the community more resilient to wildfire threats.

The Bel-Air Association has taken a proactive approach to addressing many of the issues identified by the group. But the applicable public agencies must take a more coordinated and active role to mitigate fires. So the highest mitigation priority is collaboration with public agencies to improve coordination and identify further ways to mitigate wildfire.

### Communication Systems

Effective, reliable communication is critical for coordinating emergency responses and ensuring residents are informed during wildfires. An emphasis was placed on enhancing cell service, using advanced technology, and employing multiple communication channels such as Wi-Fi alerts, WEA alerts, AM radio, and air horns. The group highlighted issues such as fragmented cell service and the need for backup plans like satellite phones and air raid horns. This priority is fundamental to the Mitigation Group's goal of maintaining continuous communication during emergencies, as the ability to convey information swiftly can significantly impact the effectiveness of fire response and resident safety. To this end, the use of localized What's App groups mentioned above has had a positive impact on communication. It is widely accessible and has been an effective way of communicating among residents.

### Early Detection

Early detection of fire at the earliest possible stage allows for swift response and containment. It was presented with suggestions of using AI-driven cameras to monitor and report potential fire threats. The group acknowledged technological limitations and the need for community vigilance in early detection efforts. This priority is integral to the Mitigation strategy, as catching fires early can prevent them from spreading, thereby reducing overall damage and enhancing community safety.

### Brush Clearance

Brush clearance was included as a priority due to its importance in reducing ignitable vegetation and creating defensible space around properties. It was presented with an emphasis on regular maintenance, community involvement, and increasing enforcement of existing regulations. The group discussed the challenges of ensuring compliance and raising awareness among residents. This priority is crucial for mitigating fires, since well-maintained vegetation can significantly reduce the likelihood of fires spreading rapidly through dense hillsides.

### Awareness of Vegetation

Awareness of vegetation was highlighted to educate residents about the types of vegetation that pose fire risks and how to manage them effectively. It was presented through ideas such as distributing educational resources via bills and conducting community workshops on fire-safe landscaping. The group noted the challenges of engaging residents and ensuring they read and apply the information provided. This priority is essential for fostering a knowledgeable community that actively participates in fire prevention efforts by managing vegetation responsibly. As mentioned above, the Bel-Air Association is actively working with MySafeLA to get certified as a Fire Safe Council.

### Educational Resources

Educational resources were included to provide comprehensive information to residents about fire safety and mitigation practices. It was presented with a focus on distributing printed materials, creating online resources, and ensuring regular updates. The group discussed the importance of making these resources engaging and accessible to all residents. This priority supports the group's efforts to equip the community with the knowledge needed to take proactive steps in fire prevention and safety. BAA is working with MySafeLA to provide no cost and low cost fire hardening evaluations as part of the certification process. BAA set up several evaluations and staff was there to view the evaluation to learn and understand more.

### Collaboration

Collaboration was emphasized to foster cooperation among residents, local agencies, and fire safety experts to enhance fire mitigation efforts. It was presented through ideas such as involving homeowner associations (HOAs), neighborhood councils, and government agencies in fire safety initiatives. The group identified challenges in coordination and resource allocation but proposed strategies to strengthen community ties and formalize collaboration efforts. This priority is vital for creating a unified and effective approach to fire safety, ensuring that all stakeholders work together towards common mitigation goals.

# Recommendations

## Recommendations

Based on the workshop discussions, below are recommendations for actions the Bel-Air community can take to lower the risk of fire in their community.

### First Steps - Leadership Group

1. Form a Leadership Group that consists of members from all of the immediate HOAs. Communication among HOAs is a simple 'low hanging fruit' action to improve mitigation efforts. The Leadership Group can take the lead on initiatives to serve the Bel-Air community. The Group can build a unified voice and strategy to communicate the community's needs to government agencies.

#### Effective Leadership:

- Find leaders who have the time and dedication to lead the group; people that are going to exert energy and work together as a team

#### Coordination Among HOAs:

- Ensure all HOAs are involved and represented in the leadership group
  - Achieving consensus among diverse groups with different interests and priorities
- "We need buy-in from all the boards...because we don't want to take on tasks where the government person we're talking to suddenly says, well, the Beverly Glen people aren't part of it."

#### Community Input:

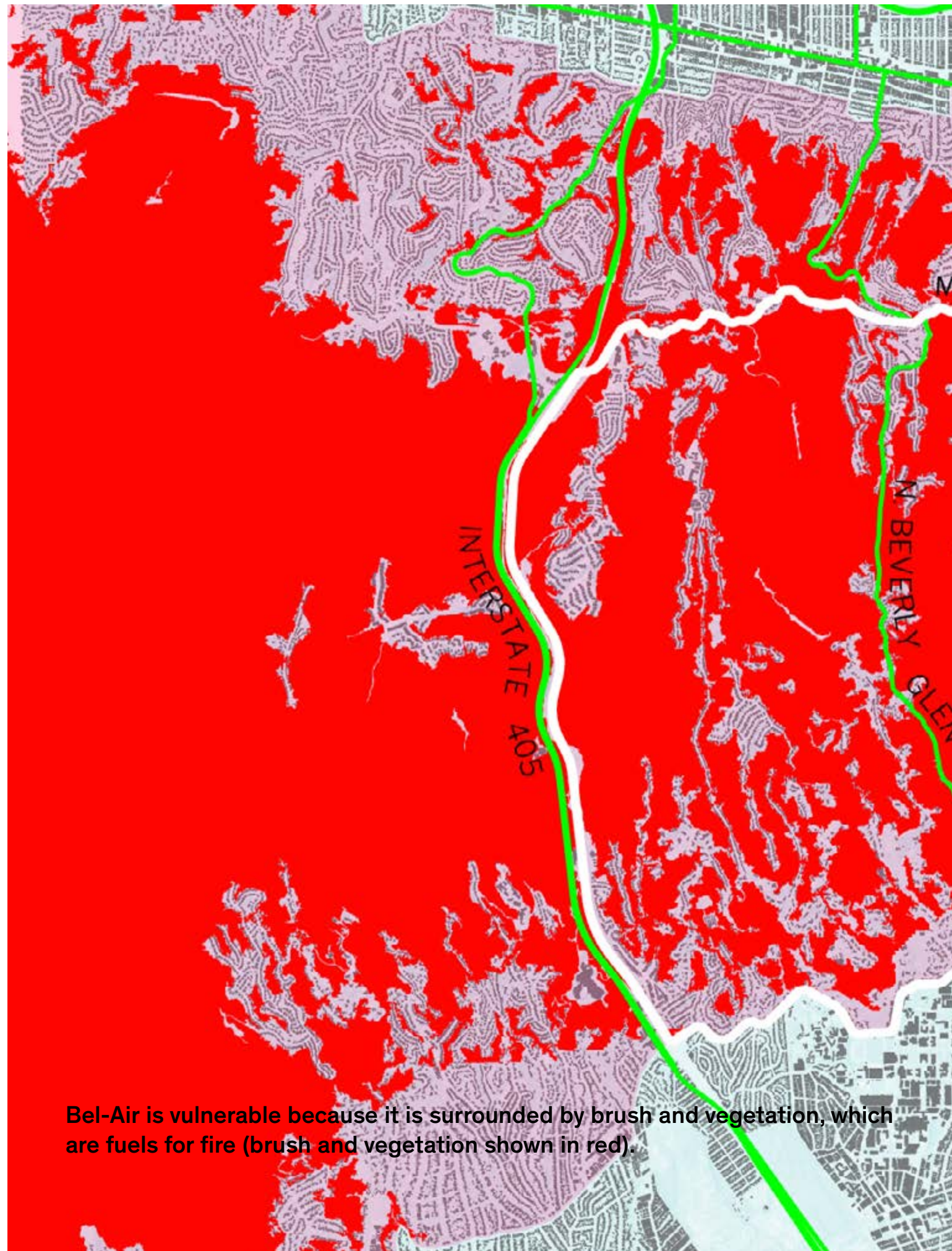
- Gather input from residents and HOAs to identify and agree on priorities.
- "Identify one issue that everyone could agree on in order to see a result happen, which would then gain momentum for hopefully other things too."

#### Building Buy-In:

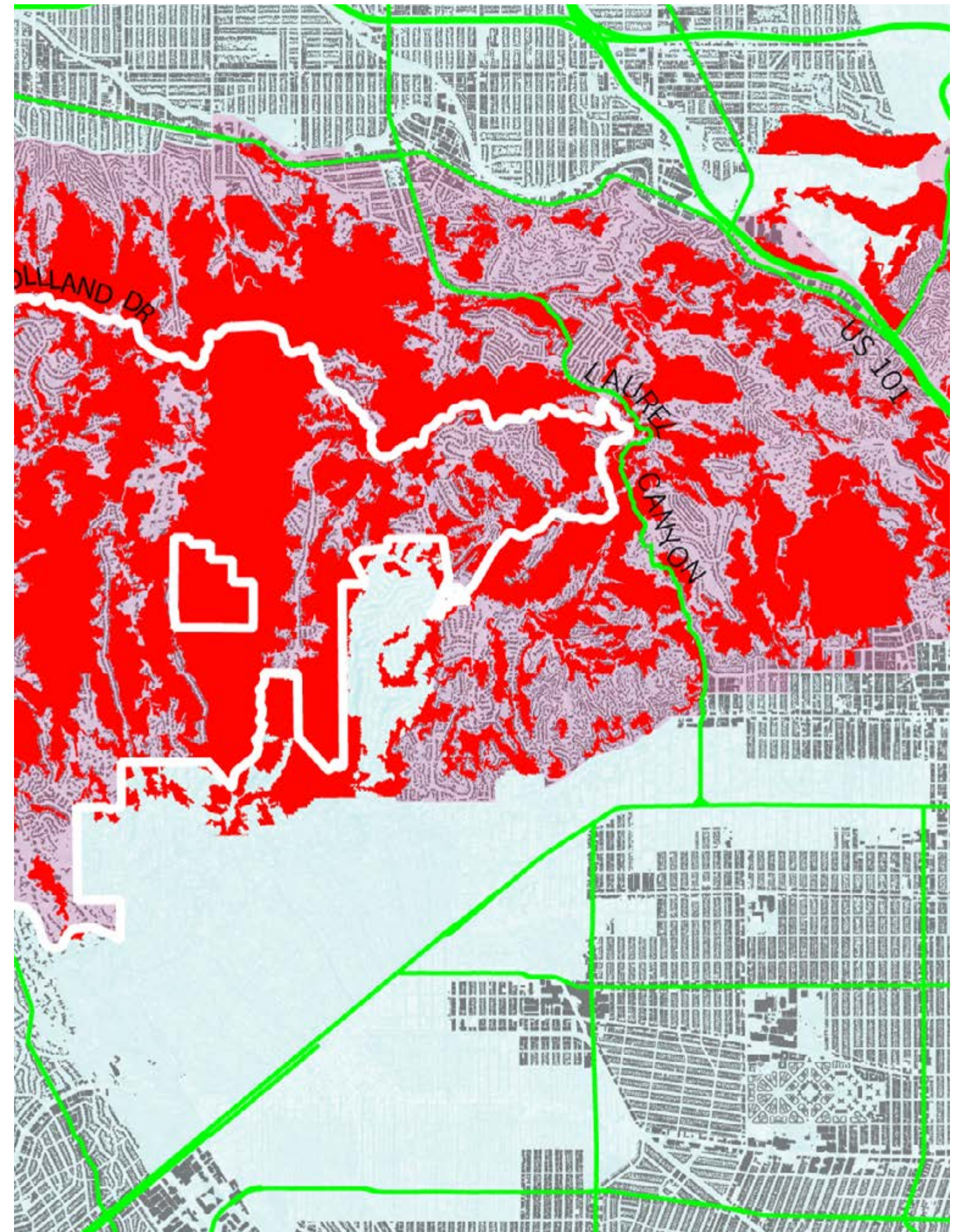
- Engage all HOAs to form a unified leadership group.
- "Hold a meeting of all the Bel-Air HOA boards to form an ad hoc committee to build buy-in."

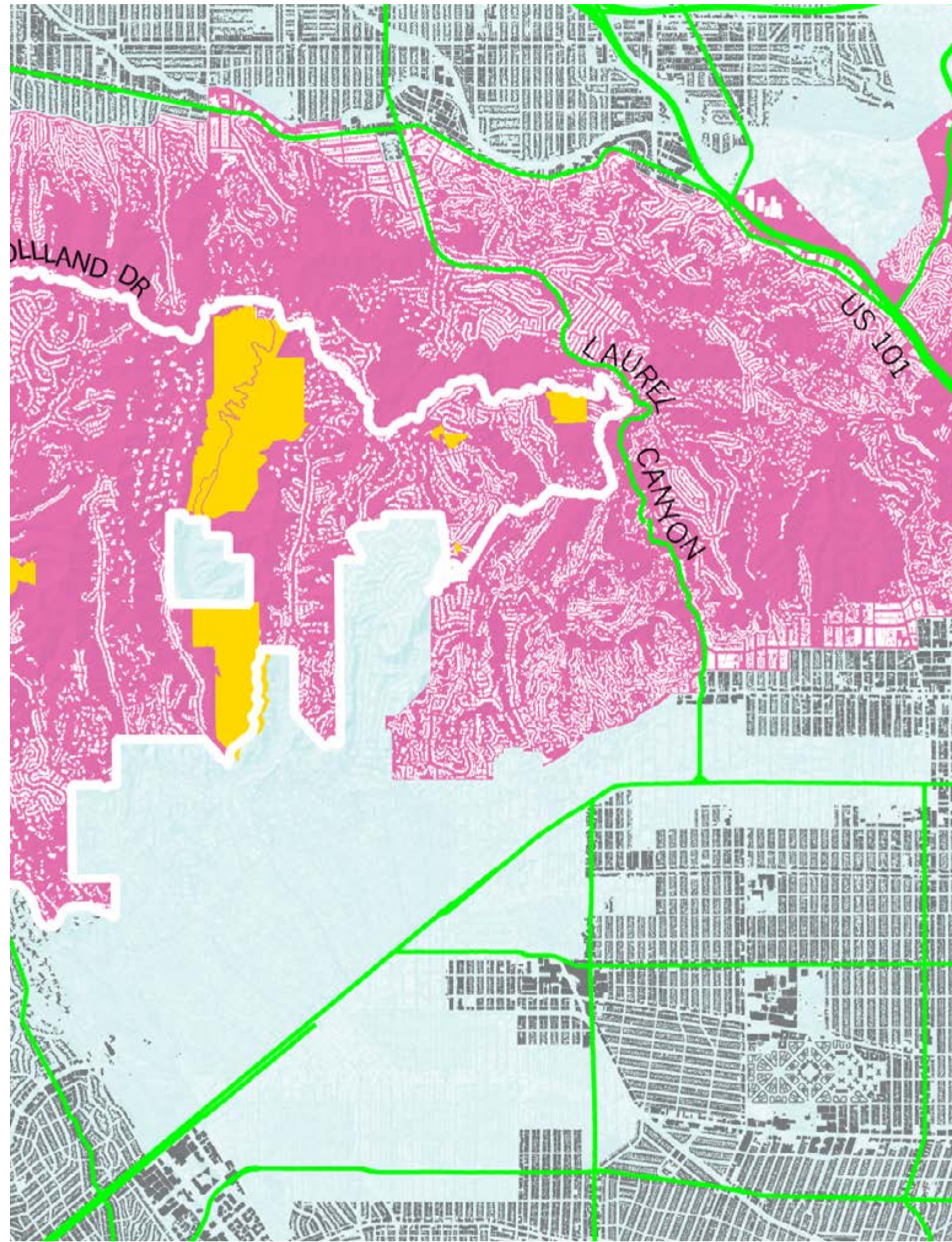
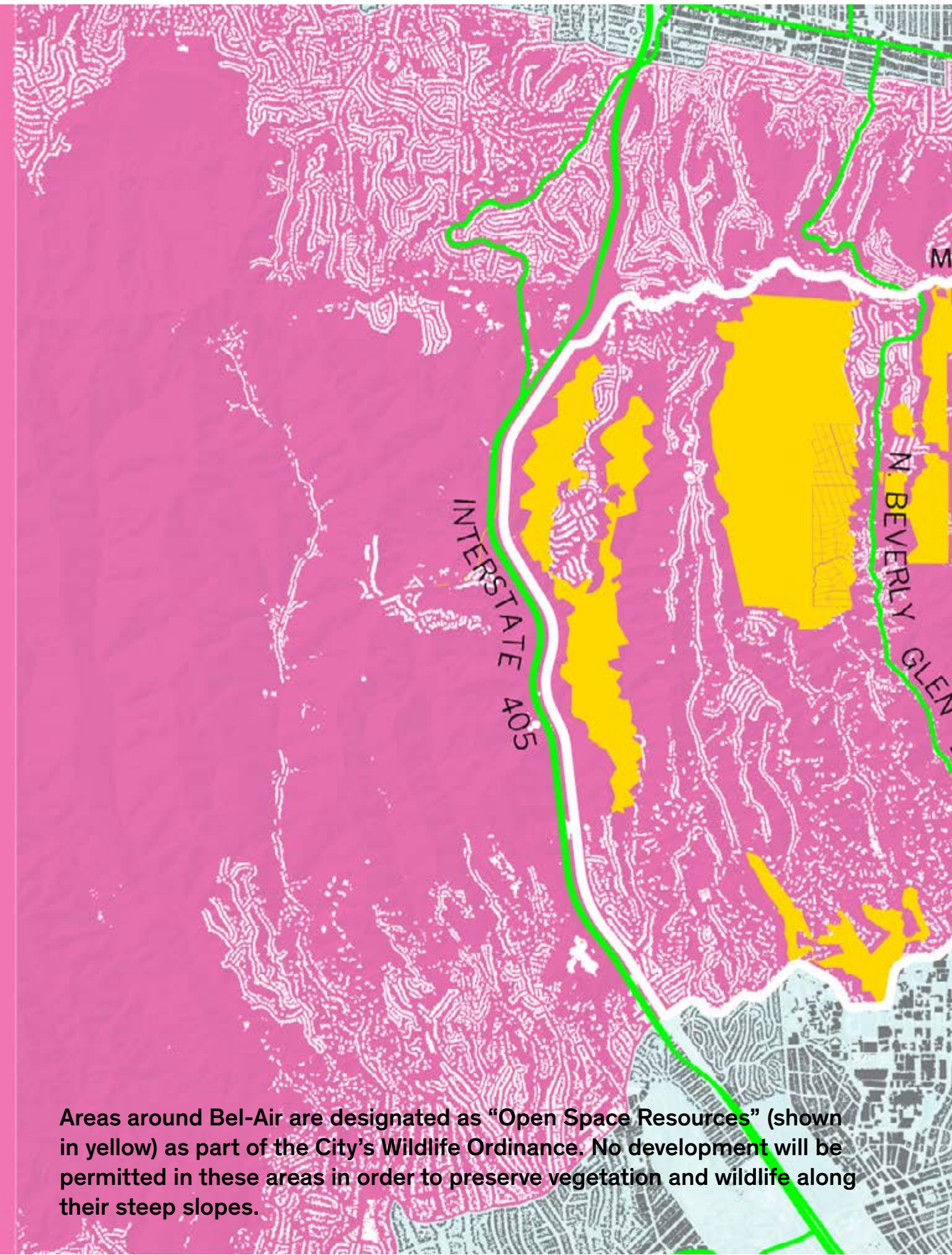
#### An Active Partner with Emergency Agencies:

- Leadership group should be seen by emergency response agencies as an active partner in the coordination process



Bel-Air is vulnerable because it is surrounded by brush and vegetation, which are fuels for fire (brush and vegetation shown in red).





Areas around Bel-Air are designated as “Open Space Resources” (shown in yellow) as part of the City’s Wildlife Ordinance. No development will be permitted in these areas in order to preserve vegetation and wildlife along their steep slopes.



Residents have expressed concern that government-owned lands around Bel-Air aren't adequately maintained to mitigate the spread of fire. State-owned land is shown in yellow. County-owned land is in blue. City-owned is in magenta.



#### Prioritize Resources:

- Ensuring resources are allocated effectively to address the most critical issues including prioritization of cell phone towers on the upper portions of Bel-Air: Stone Canyon, Bel Air Road, and Linda Flora Drive

#### Ad Hoc Committees:

- Form specific ad hoc committees to tackle particular issues, allowing for focused and effective action.

#### Clear Communication:

- Clearly communicate the importance of identified priorities and the benefits of focusing on them
  - “Identify one issue that everyone could agree on in order to see a result happen, which would then gain momentum for hopefully other things too.”

#### Form a Communication Platform - possibly with two channels:

- (a) Communications to residents, local businesses, and businesses providing services to residents, like construction crews,
- (b) Communications to public agencies in order to convey demands, track progress on issues, and identify sources of accountability. This could be done on a social media platform or on a dedicated website. Could be managed by a Leadership Group subcommittee.

#### Identifying Priorities:

- Establish clear priorities to focus efforts and resources on the most critical issues.
- Ensure that all stakeholders are aligned on key objectives.

#### Creating an Evacuation Plan

- An evacuation plan needs to be formulated in tandem with the Fire Department and input from UCLA Emergency Services. Regular mock fire drills should be scheduled. The Bel-Air WhatsApp chats and blog should be used for testing emergency messaging.

Based on dialogue with residents, the Leadership Group could initiate actions from among the concerns expressed below.

### Three (3) Major Areas of Concern

#### 1. Public Private Collaboration

##### Council Member Engagement

Engaging with the council member to advocate for community needs and secure government support. This principle is important because council members can act as liaisons, convening relevant agencies, coordinating actions and resources from various government agencies. By maintaining regular communication and involving our council member in community activities, the community can leverage this relationship to access resources and support needed for effective fire mitigation. This engagement ensures that the community’s needs are prioritized and that there is a concerted effort from local government to support fire safety initiatives.

The Council member can advocate for Fire Preparedness exercises:

- Advocate for local evacuation exercises and other preparedness activities. Leadership group can advocate with Council District to organize a full drill with city agencies and residents modeled on the Hansen Dam drill
- Conduct regular multi-agency drills to ensure preparedness and effective response
- Possibly collaborate with the council district that represents Mandeville Canyon

##### Political Will:

- Ensure that the council member prioritizes the community’s needs and advocates effectively
- Develop a relationship with the member’s office so they know the Leadership group’s representative by name.

##### Convening Agencies:

- Coordinating efforts among various government agencies, utilities, and private entities through the council member’s support to collaborate on fire mitigation and emergency preparedness
- The Council office can convene the relevant city entities and get the right, most effective, knowledgeable people in those agencies involved
- Coordinate actions to ensure an efficient use of resources
- Engage agencies like DWP, LAFD
- Engage MRCA (Mountain Recreation and Conservation Authority), which oversees the Santa Monica Mountains Conservancy

- Hold regular meetings with relevant agencies to discuss and plan fire mitigation strategies
- Securing sufficient commitments from all involved agencies
- Create formal agreements to define roles, responsibilities, and commitments of each agency
- Establish regular communication channels to keep all agencies informed and engaged
- As a start, focus on specific, achievable goals to demonstrate success and build momentum

## 2. Access

### Enhance Coordination with Authorities:

- Create a mechanism for reporting (aside from 311) which can be publicly displayed so appropriate government agencies can be held accountable, maintenance tickets monitored and status updated; develop a shared community contact list for quick access to relevant city officials and departments
- Develop clear communication strategies and protocols for interagency coordination
- Leadership group to collaborate with governmental entities such as DWP for alternative exit routes and maintenance of access points
- Enhance Early Warning Systems: Implement Early Warning Systems and predictive models to provide residents with advance notice of potential evacuations

### Leveraging Community Contacts:

- Identify influential residents with relationships city leaders, agency decision makers, informed agency administrators and coordinators; asset mapping
- Utilize contacts within the Department of Transportation (DOT) to expedite signage requests
- Work with governmental entities and local organizations to enhance community education and support legislative actions
- Advocate for legislative actions that support fire safety and interagency collaboration
- Utilize existing contacts and relationships with agencies to expedite collaboration and response efforts

### Strengthening Enforcement:

- Engage with Council Members and city officials to prioritize signage and enforcement
- Coordinate with Leadership Group to enforce signage posting and maintenance; ensure that responsible entities are aware of and actively implement enforcement measures
- Consider having ACS identify and contact on-site construction superintendents to inform them of fire prevention regulations and reasons for enforcement
- Advocate for more consistent and active enforcement from city services and parking authorities
- Share information with residents describing where and how to report enforcement issues, including the use of 311 in order to ensure residents know how to effectively report problems
- Create a working plan with LAPD to make parking enforcement a priority on Red Flag Days
- Ensure all Red Flag Days and No Parking signs are clearly posted and maintained
- Implement regular checks to ensure signs remain in place and visible

### Enhancing Evacuation Protocols, Awareness, Education:

- Using surveys, identify communication strategies that residents listen and respond to
- The Communication subcommittee can educate the community about the importance of fire danger signs and parking restrictions through social media messages, posted flyers, and emails
- Leverage existing email programs and community groups to disseminate information and updates
- Establish clear communication protocols and responsibilities for disseminating evacuation information
- Updates to residents can inform the community of periods of increased fire risks
- Posted flyers can include a QR code to provide additional information
- Set up fire awareness talks at schools/churches/community locations
- Collaborating with governmental entities such as DWP for an alternative exit route

#### Improving Road Quality and Maintenance:

- Communications subcommittee to expedite road maintenance and repairs to ensure accessibility during emergencies

### 3. Mitigation

#### A. Communication Systems

##### Purpose:

- Ensure timely and reliable dissemination of information to residents and emergency responders
- Facilitate effective communication during emergencies, particularly in the event of wildfires

##### Types of Communication Systems Mentioned:

##### Advanced Technology:

- Increase the number of cell towers and use advanced technology to enhance communication infrastructure
- Leadership group to continue to coordinate with Telecommunication companies and DWP to identify cell service dead zones, where repeaters should go, and determine how to fast track implementation
- Utilize early warning communication methods, including air horns and Civil Defense sirens
- Install CalFire cameras in Bel-Air Hills; install equipment such as radio repeater or other infrastructure to augment radio communication around or over ridges

##### Communication Channels:

- Use Wi-Fi, WEA (Cellphone) alerts, AM radio, and other communication channels to ensure information reaches all residents
- Leadership group to coordinate with corresponding agencies to implement and test technologies
- Ensuring that communication systems remain operational during power outages or technological failures

##### Strategies for Improvement:

##### Enhancing Communication Infrastructure:

- Install additional cell towers and micro cells to improve coverage and reliability.
- “Maybe like micro, like you’re talking about or you’re talking about micro, like the repeaters. Micro cells. I mean, they’re not intrusive.”

#### Utilizing Multiple Communication Methods:

- Employ a combination of new and old communication methods, such as Wi-Fi alerts, WEA alerts, AM radio, and air horns.
- “Through, Wi-Fi or alerting and, or, WEA alerts and, and I personally like, am radio when all else fails.”
- “Early warning detection through, what do we call those things as air horns?”

#### Community Engagement and Collaboration:

- Work with city officials and agencies to ensure communication systems are prioritized and maintained.
- “Communications is the single most important thing. And if it’s jeopardized, all these plans are out.”

#### Developing Redundancy Plans:

- Implement backup communication plans, such as satellite phones and air raid horns, to ensure continuous communication during emergencies

#### B. Early Detection

##### Purpose:

- Identify fires at the earliest possible stage to enable swift response and containment
- Utilize technology and community resources to monitor and report potential fire threats

##### Challenges and Issues Identified:

##### Technological Limitations:

- Dependence on technology which may fail during power outages

##### Strategies for Improvement:

##### Implementing Advanced Technology:

- Install AI-driven cameras in high-risk areas to provide constant monitoring and early detection

#### Enhancing Community Reporting:

- Ensure community members are vigilant and know how to report potential fires and report any signs of fire immediately
- Conduct community training sessions to teach residents how to identify and report fire threats

#### Developing Backup Plans:

- Create backup detection plans, such as using volunteers for manual monitoring during power outages

### C. Brush Clearance

#### Purpose:

- Reduce the amount of flammable vegetation to minimize fire risk
- Ensure compliance with brush clearance regulations to create defensible space around properties

#### Types of Brush Clearance Efforts Mentioned

#### Regular Maintenance:

- Schedule regular brush clearance activities to keep vegetation under control

#### Community Involvement:

- Engage community members in maintaining their properties and surrounding areas

#### Strategies for Improvement:

- Increase penalties for non-compliance and ensure consistent enforcement

#### Community Education Campaigns:

- Run campaigns to educate residents about the importance of brush clearance and how to do it effectively

#### Collaborating with Agencies:

- Work with local agencies to provide resources and support for brush clearance
- Provide residents with information on safe vegetation practices; educate residents about the types of vegetation that pose fire risks and how to manage them;
- Increase overall ecological literacy to prevent fire hazards; collaborate with experts to ensure accurate information is provided
- Work with UCLA to create a vegetation palette in accordance with the endemic vegetation
- Coordinate meetings to co-design the palette, the implementation and communication of this
- Organize hands-on workshops to engage residents and provide practical knowledge; workshops can teach residents about fire-safe landscaping and vegetation management
- Meet with LAFD Brush Enforcement Division to determine what is private property and what is City Property
- Work with UCLA to facilitate East-West communication

### D. Educational Resources

#### Purpose:

- Provide comprehensive educational materials to inform residents about fire safety and mitigation practices
- Ensure residents have access to the information they need to protect their properties and community

#### Strategies for Improvement:

#### Printed Materials:

- Distribute brochures, flyers, and newsletters with fire safety information
- Distribute rules to construction sites that indicate it is illegal to: (a) park in no parking zones, (b) block roads without flagmen present and proper permits, and (c) smoke in restricted hillside areas

#### Online Resources:

- Create and maintain websites with up-to-date information on fire safety and mitigation
- Ensure residents have a list of all fire safety guidelines including:
  - Home Hardening
  - Proper vent screens
  - Class A roof
  - Dual Pane windows
  - Clean rain gutters
  - No plastic or flammable furniture attached to one's home, garage, or outbuilding
  - Furniture at least five feet away from the structure
  - Home address number clearly visible from the street in order for firefighters to respond to emergency calls

#### Diversified Communication Channels:

- Use a variety of communication methods to reach different segments of the community

#### Regular Updates:

- Ensure educational materials are regularly updated with the latest fire safety practices

#### Interactive and Engaging Content:

- Create engaging and interactive educational content to capture residents' attention

### E. Collaboration

#### Purpose:

- Foster collaboration among residents, local agencies, and fire safety experts to improve fire mitigation efforts

#### Strategies for Improvement:

#### Securing Funding and Resources:

- Obtain grants and other funding to support collaborative fire safety projects

#### Resource Allocation:

- Allocate sufficient HOA resources to support collaboration efforts

#### Strengthening Community Ties:

- Build strong relationships between residents and local organizations by encouraging regular interaction between HOAs, neighborhood councils, and residents
- Locate and obtain all property owner's contact information to improve fire safety and emergency preparedness
- Create emergency alerts for all residents

#### Formalizing Collaboration Efforts:

- Create formal agreements and plans for collaboration among stakeholders with clear roles and responsibilities
- Establish immediate responses by vested agencies to enforce compliance with No Parking signs, road obstruction caused by construction vehicles to ensure road access for emergency vehicles
- Establish a direct line of communication with LAFD Brush Clearance Division to follow up on compliance
- Establish direct contact with the Caltrans Superintendent to report fire hazards
- Identify lead UCLA contact to identify areas at UCLA that need brush clearance

# Acknowledgments

The organizers are grateful for the engagement and support of:

Dawn Nakagawa, Berggruen Institute  
Jonathan Brand, Bel-Air Association  
Jamie Meyer, Bel-Air Association  
Christina Sobczak, Bel-Air Association  
Travis Longcore, UCLA IoES, Bel Air-Beverly Crest Neighborhood Council  
Joseph Everett, LAFD  
Jennifer Lazo, City of LA Emergency Management  
Anthony Aguinaga, LADWP  
John Bacon, LADWP  
Lisa Martin, UCLA Emergency Management  
Brett Steele, UCLA School of the Arts and Architecture  
Mariana Ibanez, UCLA Architecture and Urban Design  
Hitoshi Abe, UCLA Architecture and Urban Design  
Jennifer Green, UCLA School of the Arts and Architecture  
Indulekha Nair, UCLA Architecture and Urban Design  
Beatriz Tzung Lima Soares, UCLA Architecture and Urban Design  
Debbie Tilkema, UCLA Architecture and Urban Design

Prepared by  
Jeffrey Inaba, UCLA Architecture and Urban Design  
Gabriel Kahan, Berggruen Institute  
Emile Mack, LAFD (Retired)  
Alex Garcia, UCLA Architecture and Urban Design

# Next Steps

## **Option 1**

Bel-Air Focused Report & Public Presentation to Decision Makers

One additional round of input from other Bel-Air organizations

Produce Bel-Air Final Report (Print & Web)

Convene Council member (District 5), County Supervisor, Relevant Agencies

## **Option 2**

Leadership Framework the Santa Monica Mountain Communities  
Districts 5, 11, 3

Two Workshops

a. Topanga, Palisades, Brentwood

b. Woodland Hills, Encino, Tarzana

Produce a Leadership Framework for near- and long-term Actions

Convene Council members, County Supervisor, Mayor